

INSERT TECHNICIAN MANUAL

EVACALOR ANDREA 9KW



PUNTO FUOCO ALESSIO 9KW

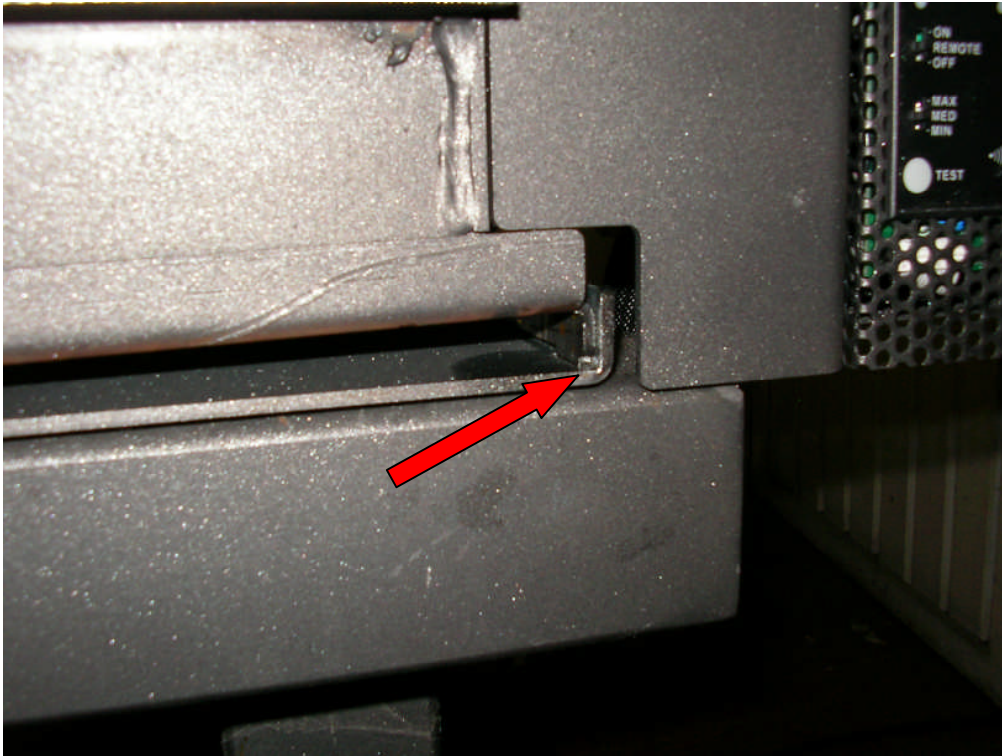


1-EXTRACT THE INSERT FROM THE RECESS	PAG. .3
2-CENTRIFUGAL FAN REPLACEMENT	PAG. 4
3-IGNITION RESISTANCE REPLACEMENT	PAG.5
4- AUGER MOTOR REPLACEMENT	PAG.6
5- PRESSURE SWITCH SUBSTITUTION	PAG.7
6-SMOKES MOTOR REPLACEMENT	PAG.8
7-AIR COMBUSTION PROBE REPLACEMENT	PAG.9
8- PELLET PROBE REPLACEMENT	PAG.10
9- MAIN BOARD REPLACEMENT	PAG.11
10- DISPLAY BOARD/ FLAT CABLE REPLACEMENT	PAG.12
11- SECURITY THERMOSTAT REPLACEMENT	PAG.13
12- SMOKES PROBE REPLACEMENT	PAG.14
13- ALARMS CHART	PAG.15

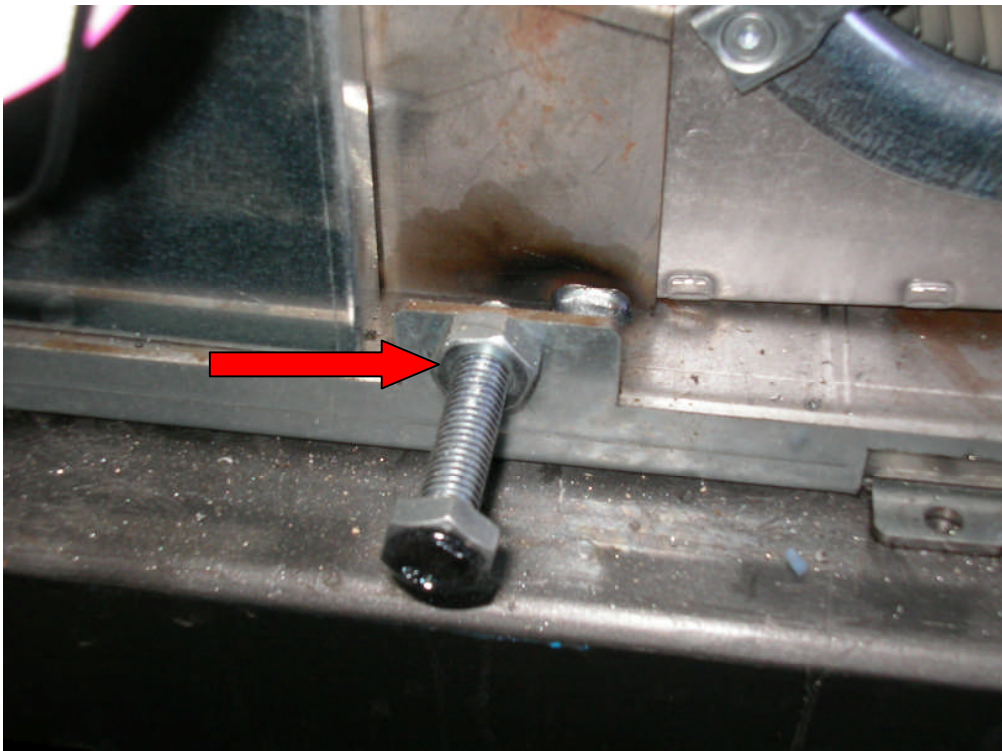
INSERT EXTRACTION

TO EXTRACT THE INSERT IT'S NECESSARY TO LIFT THE FRONT PART TO UNBLOCK IT FROM THE SAFETY LOCKING DEVICES (PIC.1); WHEN IT'S LIFTED, YOU HAVE TO PULL IT OUTWARDS UNTIL THE LIMIT. THE INSERT HAS TWO SECURITY SCREWS WHICH IMPEDE THE COMPLETE EXTRACTION OF THE INSERT (PIC.2).

PIC.1



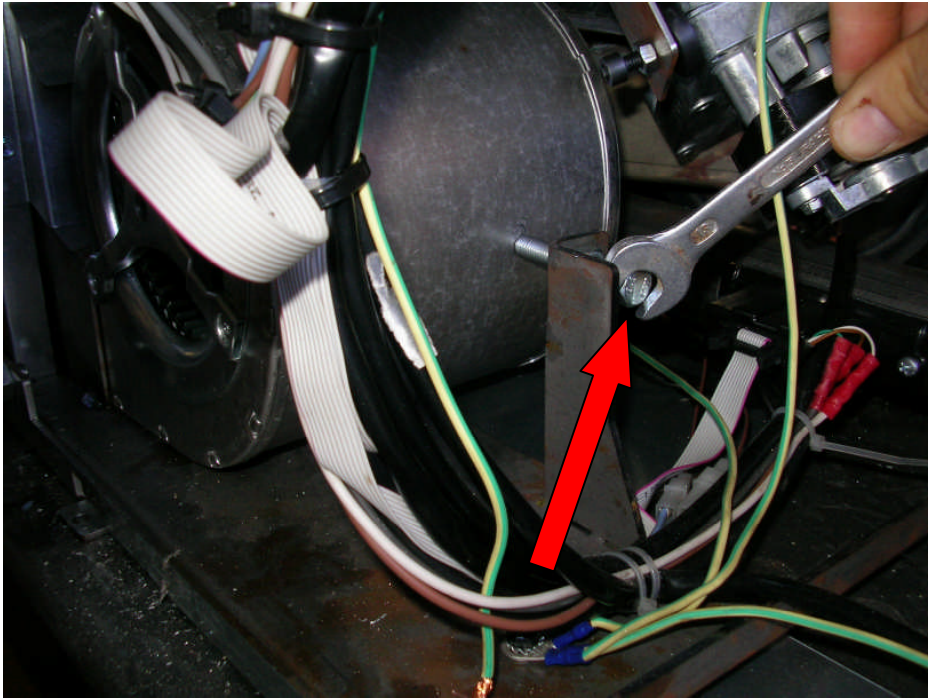
PIC.2



CENTRIFUGAL FAN REPLACEMENT

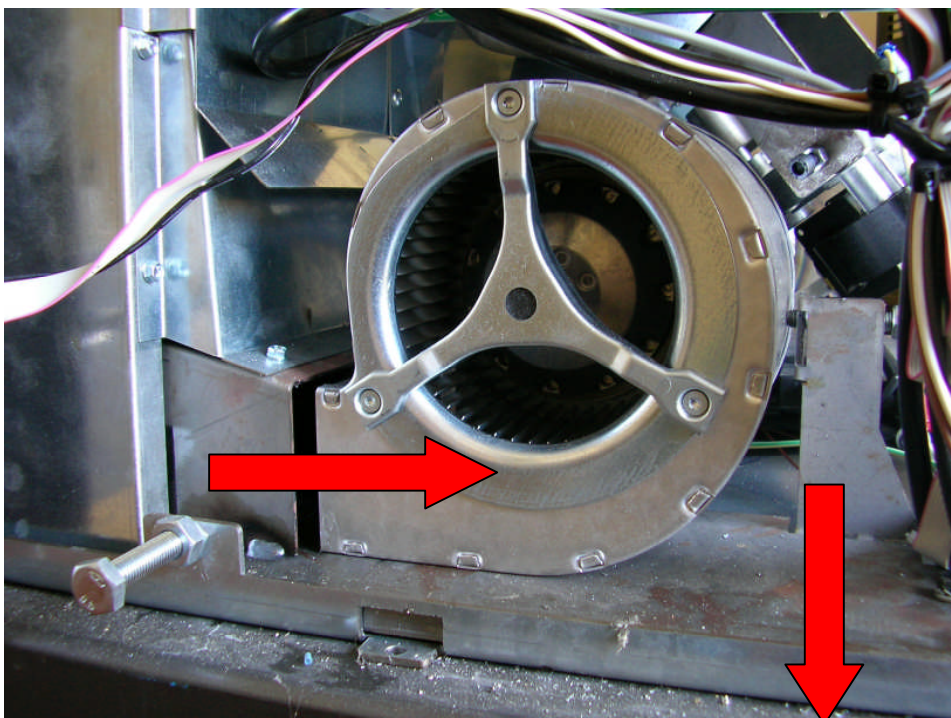
LOOSEN THE SCREW THAT FIXES THE FAN (PIC.3) WITH A 13 HEXAGONAL WRENCH.

PIC.3



WHEN THE SCREW HAS BEEN REMOVED, YOU CAN EXTRACT THE INSERT BY MAKING IT SLIDING IT BACKWARDS AND THEN OUTWARDS (PIC.4); AT THIS POINT YOU HAVE THE FAN IN YOUR HAND, AND YOU CAN REPLACE IT BY DISCONNECTING THE POWER SUPPLY CONNECTORS .

PIC.4



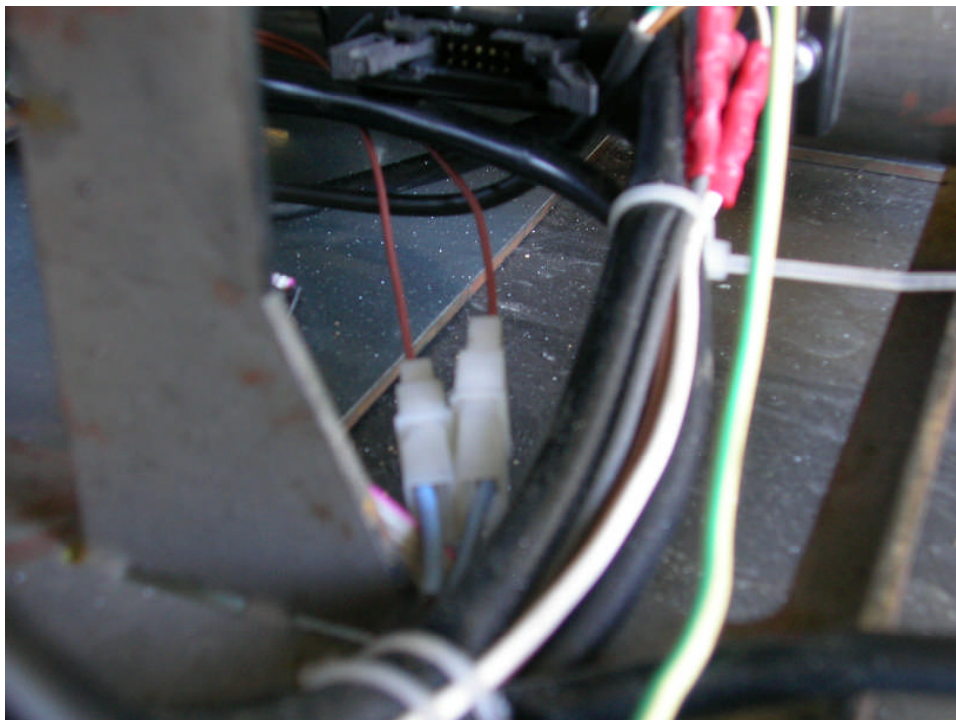
IGNITION RESISTANCE REPLACEMENT

EXTRACT THE CENTRIFUGAL FAN (PAG.4) AND UNSCREW THE RESISTANCE WITH A 17 HEXAGONAL WRENCH (PIC.5). ONCE THE SPARK PLUG IS UNSCREWED, YOU CAN DISCONNECT IT WITH THE JUNCTION (PIC.6).

PIC.5



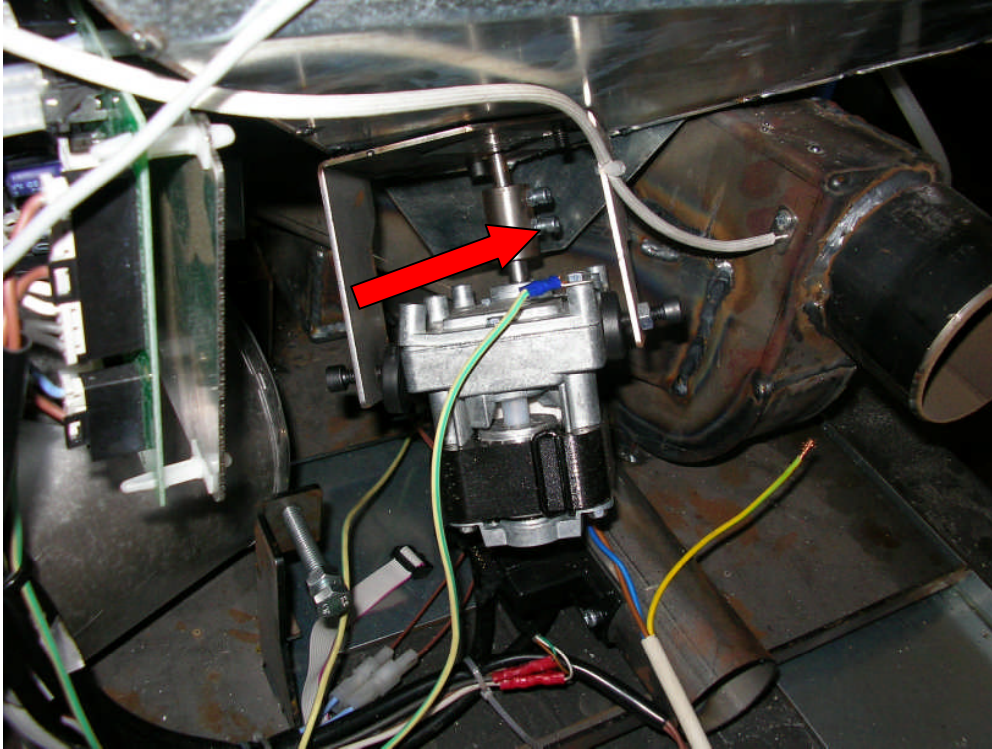
PIC.6



AUGER MOTOR REPLACEMENT

WHEN THE INSERT HAS BEEN EXTRACTED (PAG 3) FROM THE LEFT SIDE YOU CAN SEE THE AUGER MOTOR, WHICH IS SUSPENDED AND FIXED TO A JUNCTION WITH SOME SCREWS (PIC.7).

PIC.7

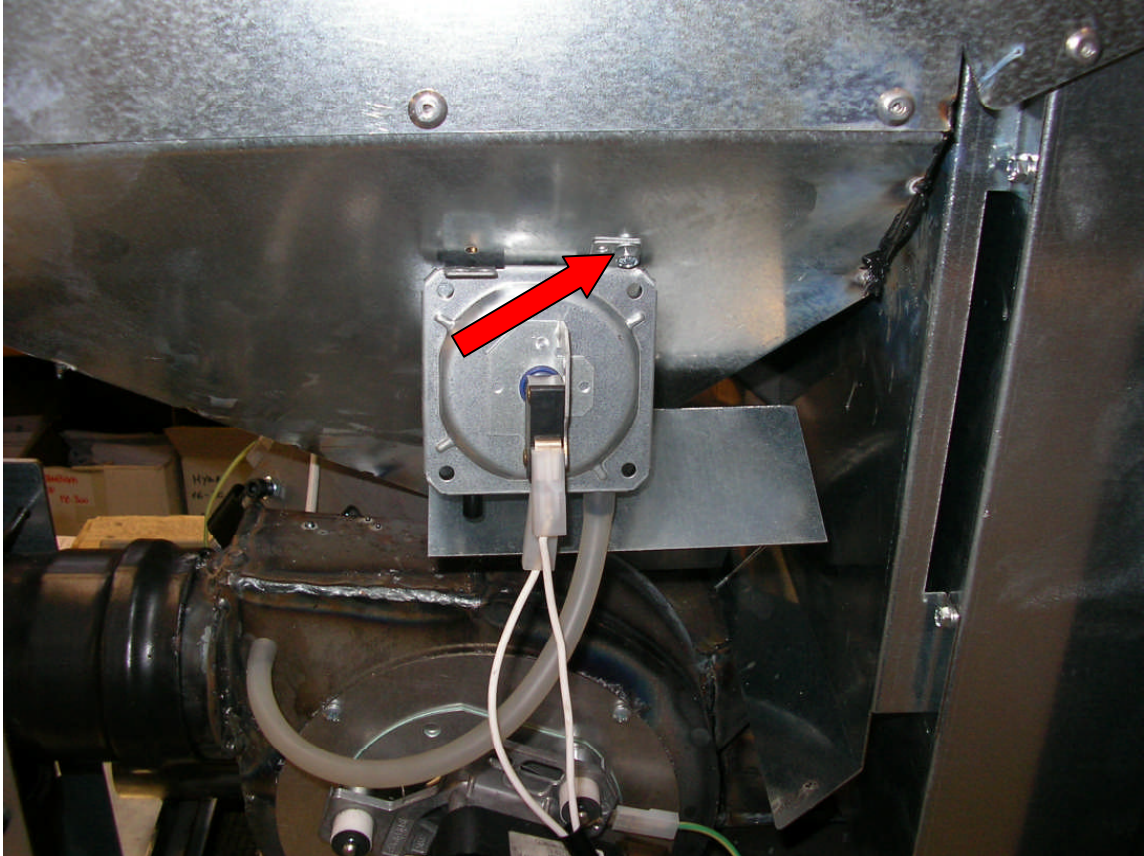


LOOSEN THE LOWER SCREW AND EXTRACT THE MOTOR.

PRESSURE SWITCH REPLACEMENT

EXTRACT THE INSERT (PAG.3), GO TO THE LEFT SIDE AND YOU WILL FIND THE PRESSURE SWITCH IN THE FRONT (PIC.8).

PIC.8

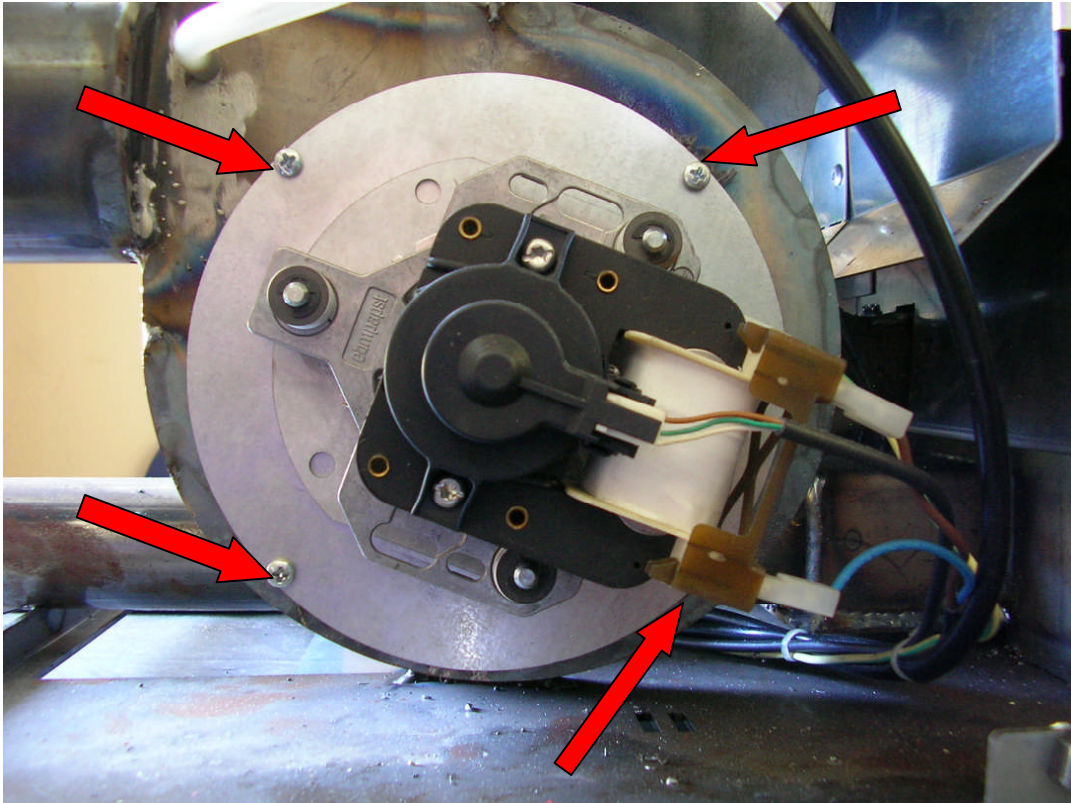


LOOSEN THE PHILLIPS SCREW AND REPLACE THE PRESSURE SWITCH.

SMOKES MOTOR REPLACEMENT

EXTRACT THE INSERT (PAG.3), GO TO THE LEFT SIDE WHERE YOU'LL FIND THE SMOKES MOTOR ON THE FRONT (PIC.9).

PIC.9



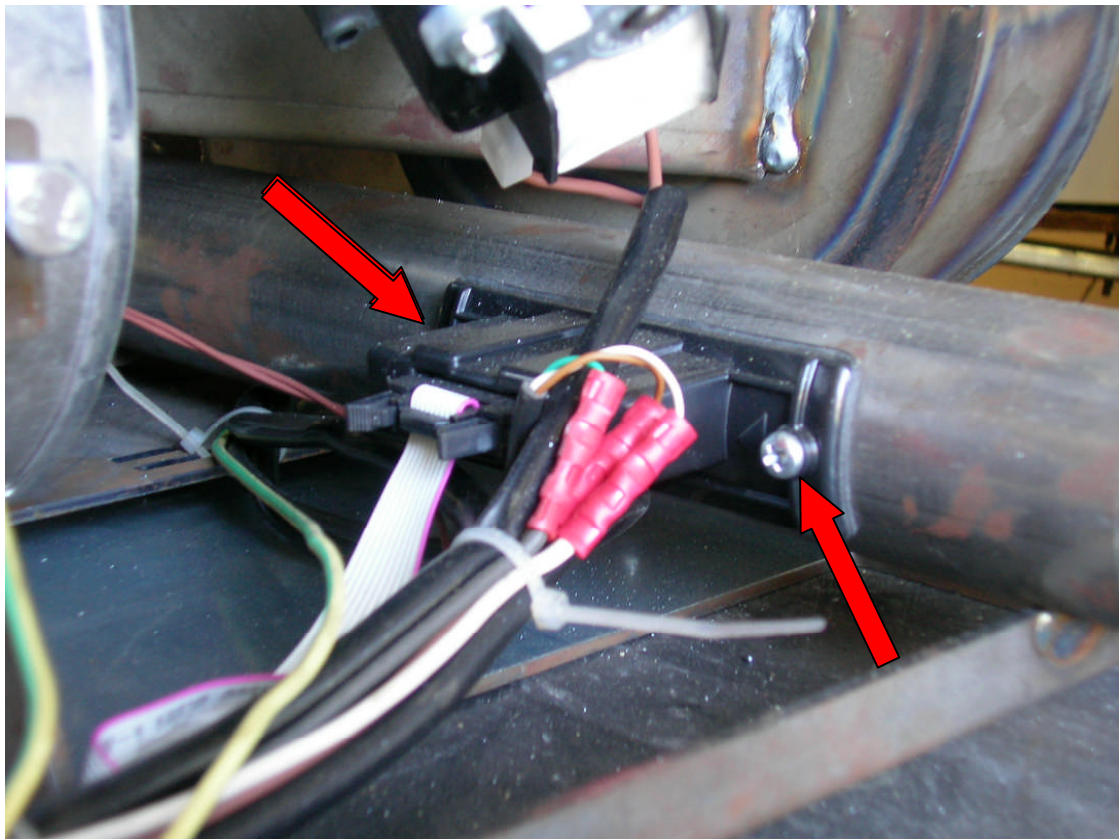
LOOSEN THE FOUR PHILLIPS SCREWS AND EXTRACT THE SMOKES FAN FROM ITS PLACE.

AIR COMBUSTION PROBE REPLACEMENT

OUR INSERTS HAVE AN AIR PROBE THAT MEASURES THE LITERS OF AIR THAT ENTER IN THE AIR OF COMBUSTION ASPIRATION PIPE: THIS ALLOWS THE ELECTRONIC BOARD TO AUTOMATICALLY CHANGE THE SPEED OF THE SMOKE MOTOR ON THE BASIS OF THE VARIOUS NEEDS AND TYPES OF INSTALLATION.

TO REPLACE THE PROBE, EXTRACT THE INSERT (PAG.3) AND GO TO THE LEFT SIDE: THE PROBE IS FIXED TO THE ASPIRATION PIPE WITH TWO PHILLIPS SCREWS (PIC.10).

PIC.10



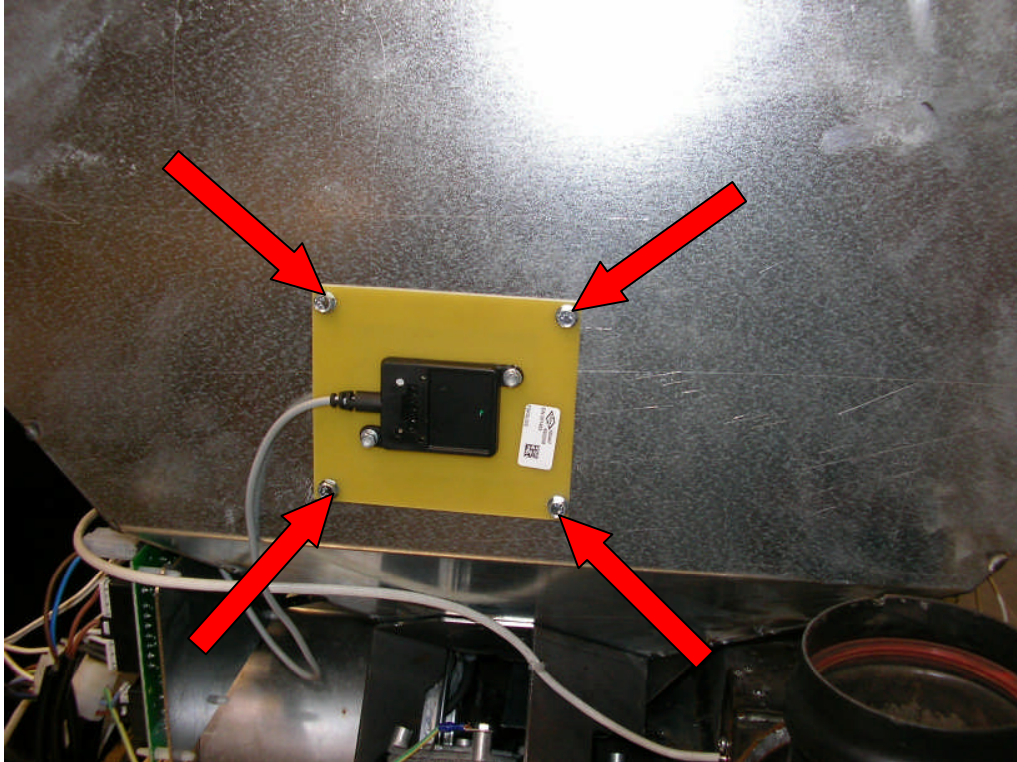
LOOSEN THE SCREWS, UNFASTEN THE FLAT CABLE AND REPLACE THE PROBE.

PELLET PROBE REPLACEMENT

THE PELLET PROBE CONTROLS THE PELLET'S LEVEL IN THE TANK, AND WHEN THE PELLET FALLS BELOW THE PROBE'S LEVEL, YOU CAN VIEW THE NOTICE: **PEL ON** ON THE DISPLAY AND THE STOVE CONTINUES TO FUNCTION UNTIL A MAXIMUM TIME SET TO 45 MINUTES. AFTER THIS TIME THE DISPLAY WILL SHOW THE ALARM: **A 15** THAT INDICATES THAT THE TANK IS EMPTY.

TO REPLACE THE PROBE EXTRACT THE INSERT FIRST (PAG.3) AND THEN UNSCREW THE FOUR SCREWS THAT FIX IT TO THE TANK. (PIC.11)

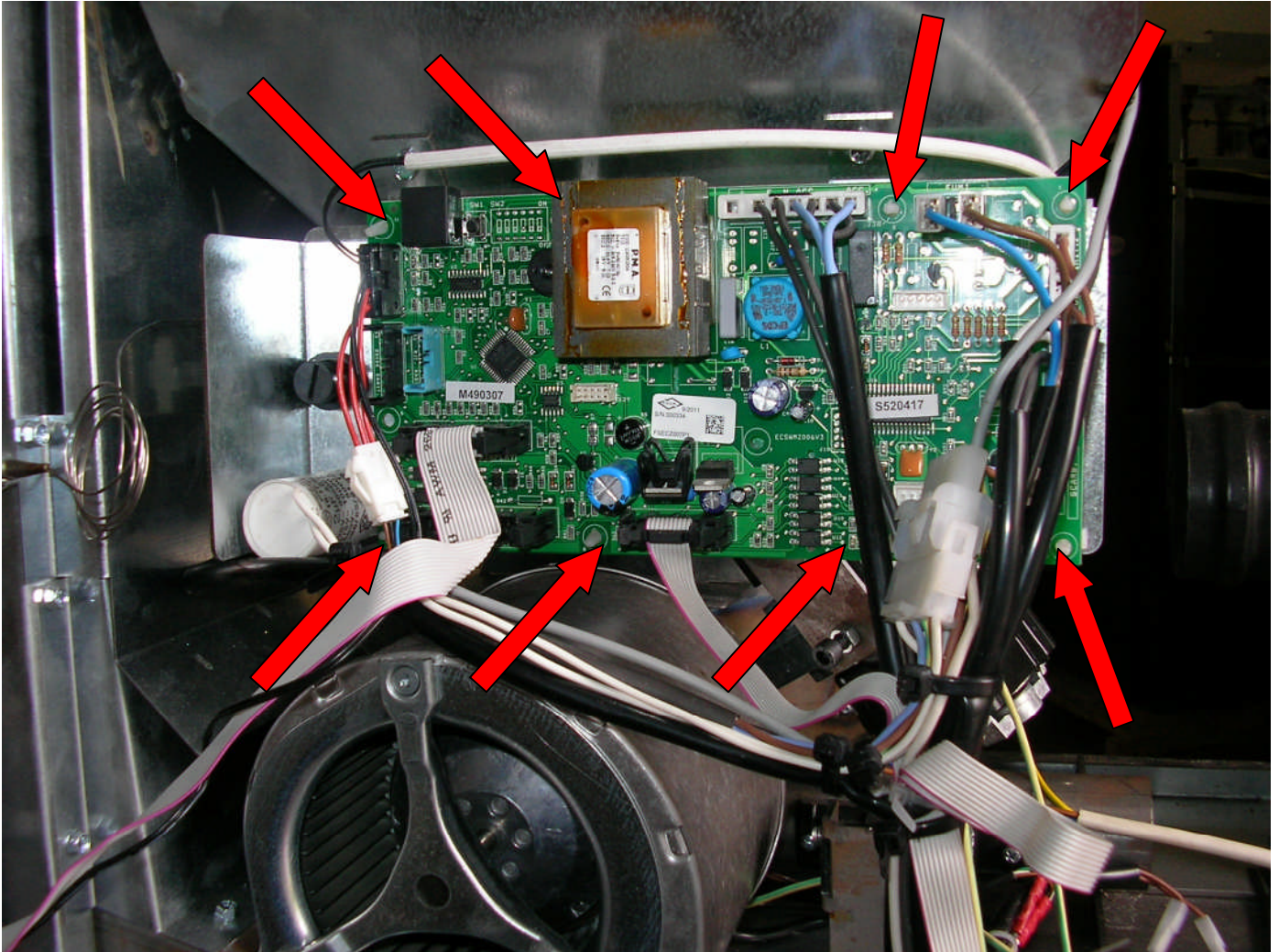
PIC.11



MAIN BOARD REPLACEMENT

EXTRACT THE INSERT (PAG.3), GO TO THE RIGHT SIDE, AND THERE YOU'LL SEE THE MAIN BOARD, FIXED WITH 8 PLASTIC CLIPS (PIC.12). LEVER ON THE SPLINE OF THE CLIP AND UNFASTEN THE BOARD FROM ITS PLACE. TO POSITION THE NEW BOARD, SIMPLY PUSH IT AGAINST THE CLIPS.

PIC.12



DISPLAY BOARD AND FLAT CABLE REPLACEMENT

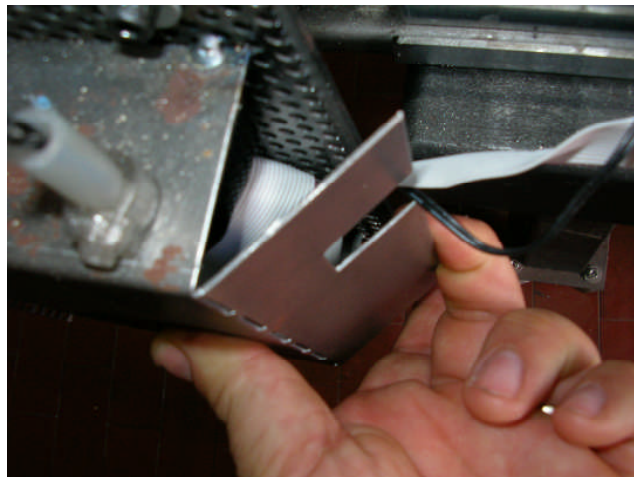
OUR DISPLAY HAS A FLAT CABLE WELDED IN ONE SIDE, THEREFORE IN THE EVENT OF A REPLACEMENT OF THE FLAT CABLE YOU HAVE TO REPLACE THE DISPLAY AS WELL. TO REPLACE THE DISPLAY YOU HAVE TO UNFASTEN IT FROM ITS PLACE BY PUSHING WITH A SLOT SCREWDRIVER THE UPPER HOOK THAT FIXES IT TO THE FRAME (PIC.13).

PIC.13



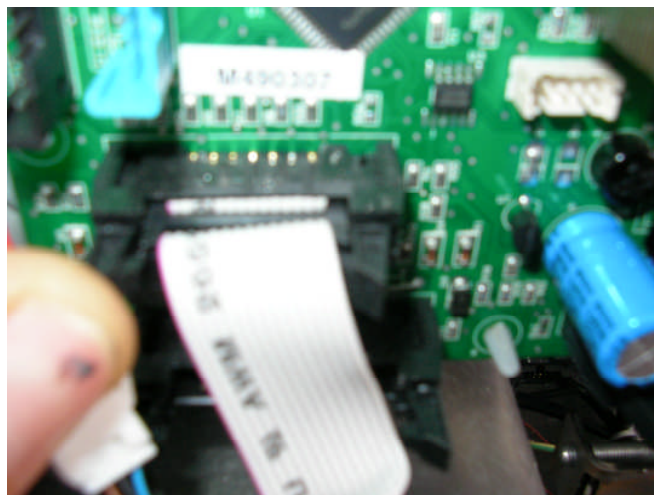
OPEN THE COMPARTMENT THAT CONTAINS THE FLAT CABLE (PIC.14)

PIC.14



AND THEN UNFASTEN IT FROM THE BOARD (PIC.15).

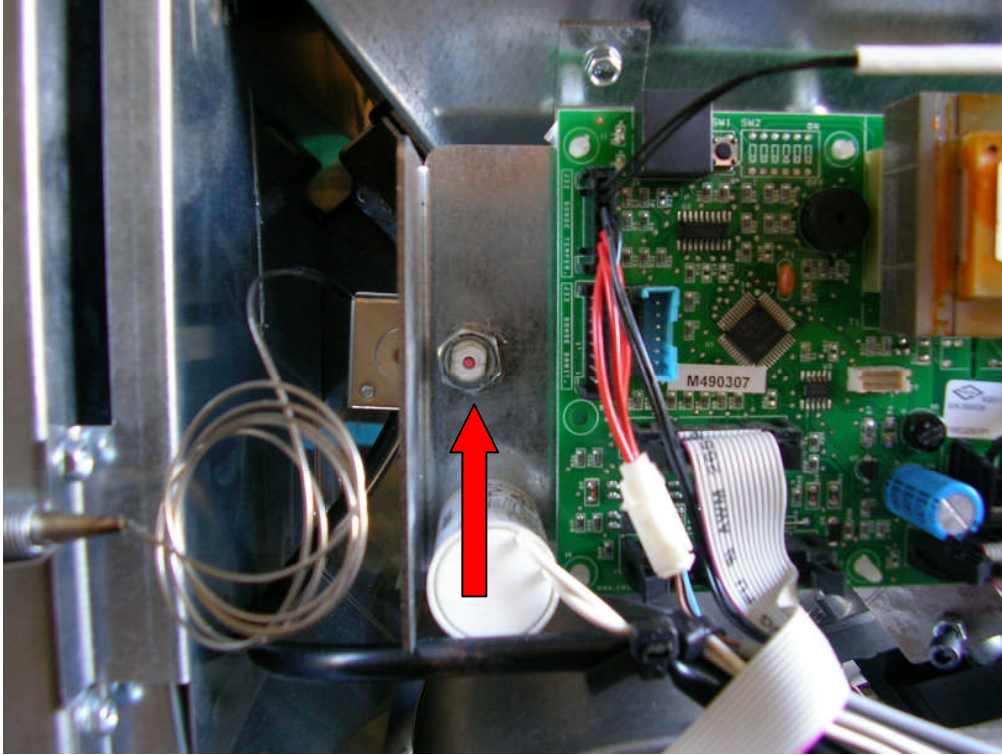
PIC.15



SECURITY THERMOSTAT WITH MANUAL RESET REPLACEMENT

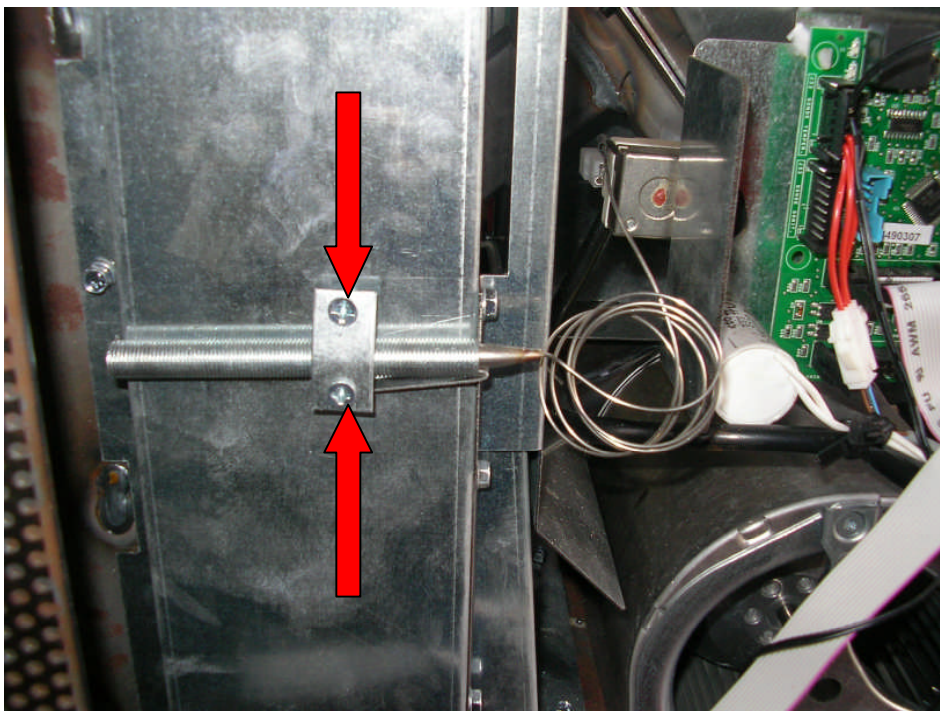
THE SECURITY THERMOSTAT IS FIXED ON THE SAME STAND OF THE MAIN BOARD WITH A NUT (PIC.16).

PIC.16



LOOSEN THE NUT AND UNSCREW THE TWO PHILLIPS SCREWS OF THE BULB STAND. (PIC.17)

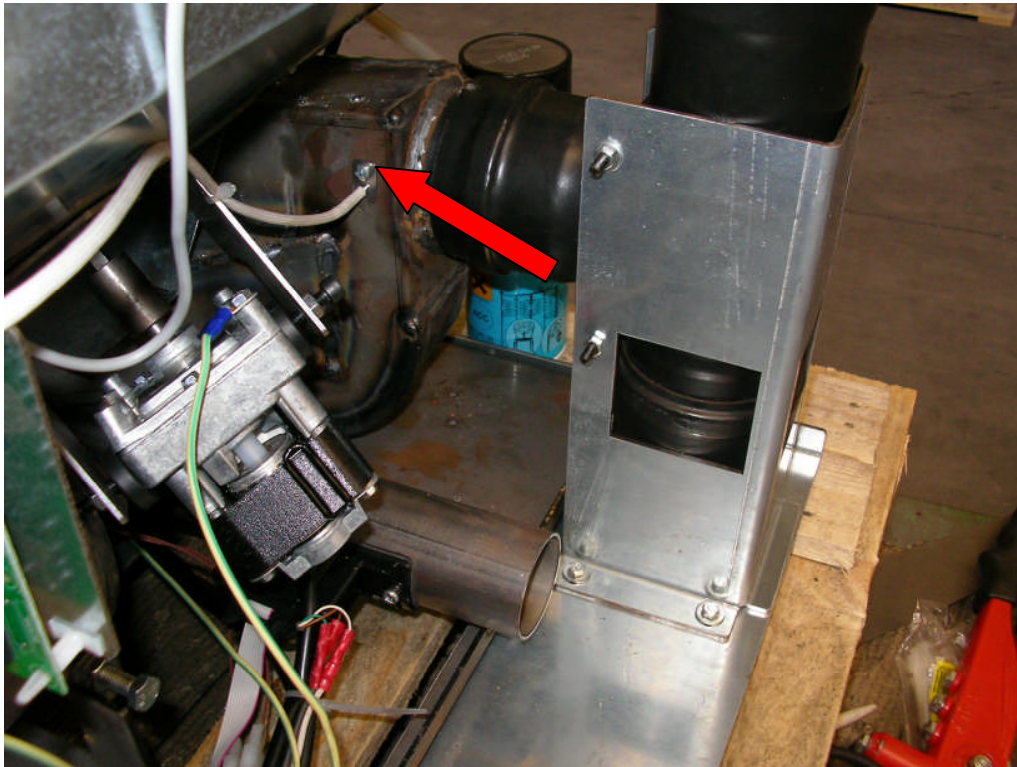
PIC.17



SMOKES PROBE REPLACEMENT

THE SMOKES PROBE IS FIXED ON THE SMOKES EXPULSION'S COCHLEA WITH A PHILLIPS SCREW (PIC.17).

PIC.17



UNSCREW THE SCREW AND DISCONNECT THE PROBE DIRECTLY FROM THE MAIN BOARD.

ALARMS CHART

VISUALISATION OF ALARMS IN EVERY STATUS OF THE STOVE'S FUNCTIONING ;
IF AN ALARM OCCURS, THE LEDS WILL SHOW THE BREAKDOWN STATUS
(SEE CHART N. 2), WHILE ON THE DISPLAY THE IDENTIFICATION OF THE ALARM
WILL APPEAR PERMANENTLY .

CHART N. 4 SHOWS THE IDENTIFICATIONS OF THE ALARMS WITH THE RELATIVE
EXTENDED DESCRIPTION.

Alarm	Description	
A01	Ignition failure	General security thermostat alarm In case that the general safety thermostat detects a temperature higher than the tripping threshold, it will intervene to shut the auger off (the power supply is in series) and at the same time the alarm A03 will appear on the display . Slightly pull out the insert, unscrew the black cap on the right side and push the button to reset the contact.
A02	Abnormal extinguishing of the fire	
A03	Excessive tank temperature	
A04	Excessive smokes temperature	
A05	Chimney obstruction	
A06	Inadequate combustion air	
A07	Open door	
A08	Damaged smokes fan	
A09	Damaged smokes probe	
A1 0	Damaged spark plug	
A11	Damaged Auger	
A1 2	Lack of communication from remote	
A13	Damaged electronic board	
A14	Damaged air flow captor	
A15	Damaged pellet level captor	
A1 6	Water pressure beyond the limits	
A1 7	Opened pellet compartment door	
A1 8	Excessive water tank temperature	